

Industry-Leading Energy Efficiency and Smart Grid Solutions for Heating and Cooling

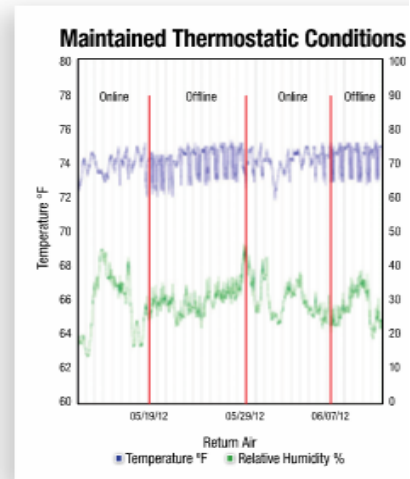
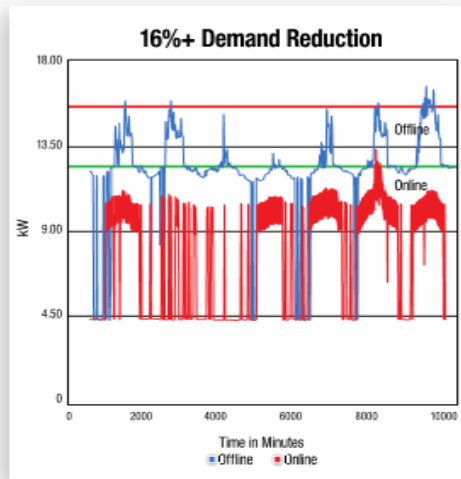
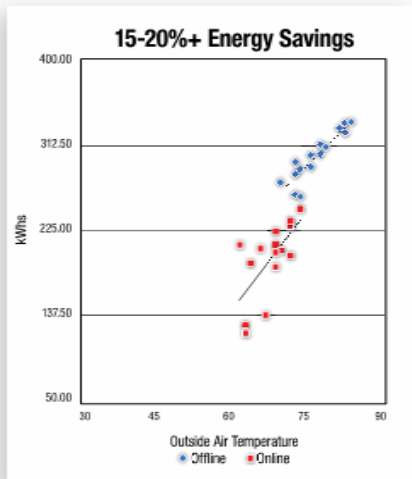
- **20%+ Energy Saving**
- **18%+ Demand Reduction**
- **Maintains Thermostatic Condition**
- **One Module, Multiple Applications**



PACE Node

Case Study: A Global Telecommunications Company

Fast installation by telecom company's regular maintenance technicians

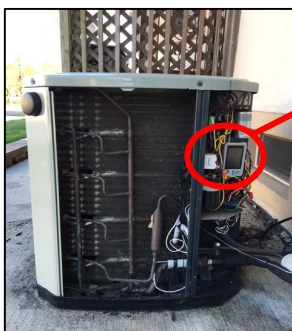


Submetering showed kWh savings of 15%-20%+ with excellent maintained setpoints—even during a hot summer, in Southeastern U.S.

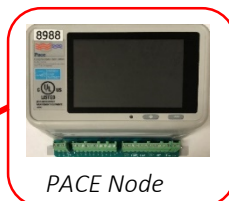
HVAC kW demand reduction of 16%+ Paybacks of 1-2 years before any utility incentives

As shown, temperatures and relative humidity in space were essentially unchanged

Savings from Your Existing Equipment



Roof-Top Unit



lte Wifi

or



PACE AI

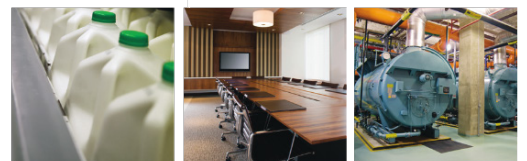
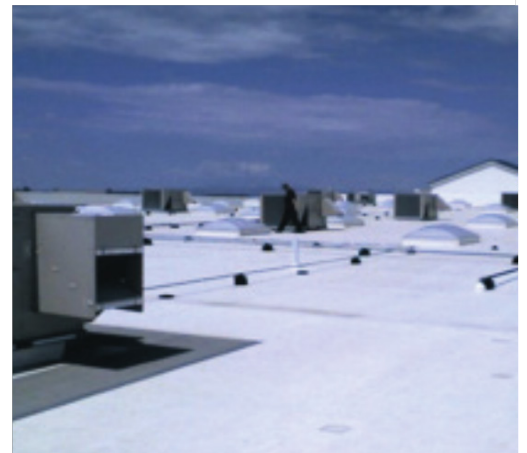
PACE AI optimizes HVAC heat exchange to reduce energy consumption.

Specifications

- Breakthrough, industry-leading performance and economics—typically 1- to 3-year paybacks across the US, rebate eligible
- Patented and proprietary software reduces electrical and fossil fuel energy consumption and cost—**typically by 10 to 20%+**
- Savings from your **existing equipment, complements existing controls**
- **Extraordinary credentialing**—proven in "gold standard" utility and DOE-funded, IPMVP-compliant testing, over 70 studies
- **Cooling applications** from residential to large commercial (3 to 100 Tons)
- **Heating applications** from residential to large boilers (80K BTU/hr and larger)
- **Refrigeration applications** from light commercial (walk-ins) to refrigerated warehouses
- **Short cycle protection, starts per hour protection & staggered start** for multi-unit installations
- Simple universal control circuitry, with installation by any HVACR technician
- **Requires no additional sensors**—however, accepts a wide range of optional IoT sensors for enhanced performance and/or extreme environmental conditions
- Fail safe operation—reverts to original thermostat control
- Close to 20,000 installations, huge range of building types and climate zones
- ENERGY STAR Partner—perfect for FEMP programs

Applications

- Package & split-system air-conditioning/heat unit
- Heat pumps (air-, ground-, water-source)
- Chiller units (non-centrifugal, < 100 Tons)
- Electric resistance heating/preheating unit
- Boilers & furnaces (natural gas, fuel oil)
- Hot water heaters (electric, natural gas, propane)
- Walk-in coolers & freezers
- Refrigerated warehouse
- Selected process heating & cooling equipment



For more information:

Energy Control Systems

E-mail: pace@ecsintl.com

Telephone: 817.483.8497

energysavings.us.com